



# WRIGHT CONCRETE

CONSTRUCTION  
CONCRETE BLOCK  
TOLL-BLENDING | DRILLING  
READY MIX | CONCRETE PUMPING  
CONVEYORS | EQUIPMENT RENTAL





# NO PROJECT TOO NO LOCATION





# CHALLENGING TOO FAR

Wright Concrete & Construction, Inc. is a full-service concrete contractor with the experience and capabilities required for any size concrete job, regardless of complexity, in any part of the United States or abroad. We are a fully bonded and insured, multi-state and Federally licensed HUB Zone and SBA small business certified concrete contractor with headquarters in Pikeville, Kentucky and Logan, West Virginia.

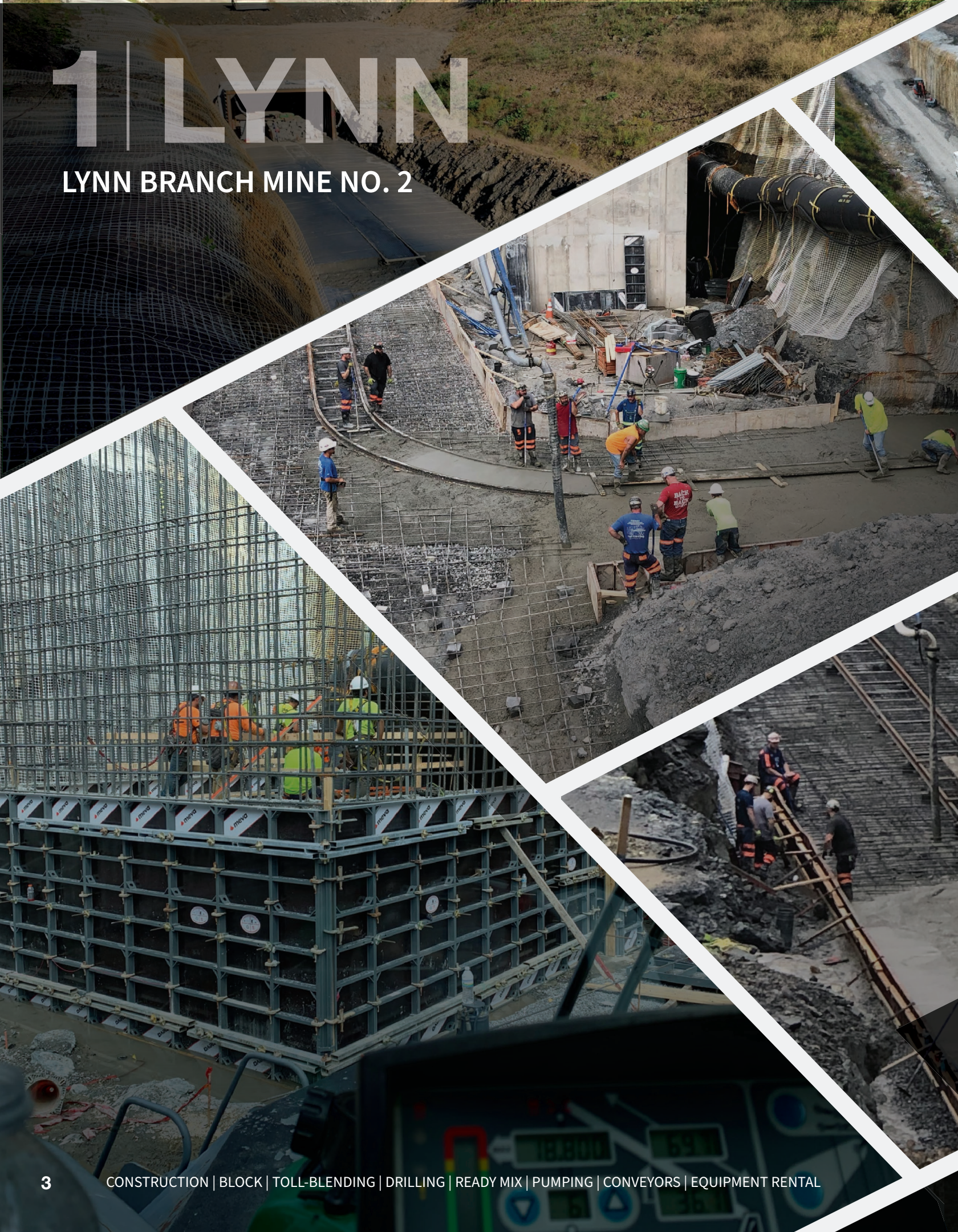
Our proven experience, expertise and resources are unparalleled in the industry, and no project is too far or too challenging for our capabilities. Serving a wide base of commercial and industrial customers, we are devoted to being the absolute best at meeting our customers' needs.

If you are considering a concrete construction project and want the peace of mind that comes from knowing it will be done right, please contact us. We look forward to the opportunity to work with you.

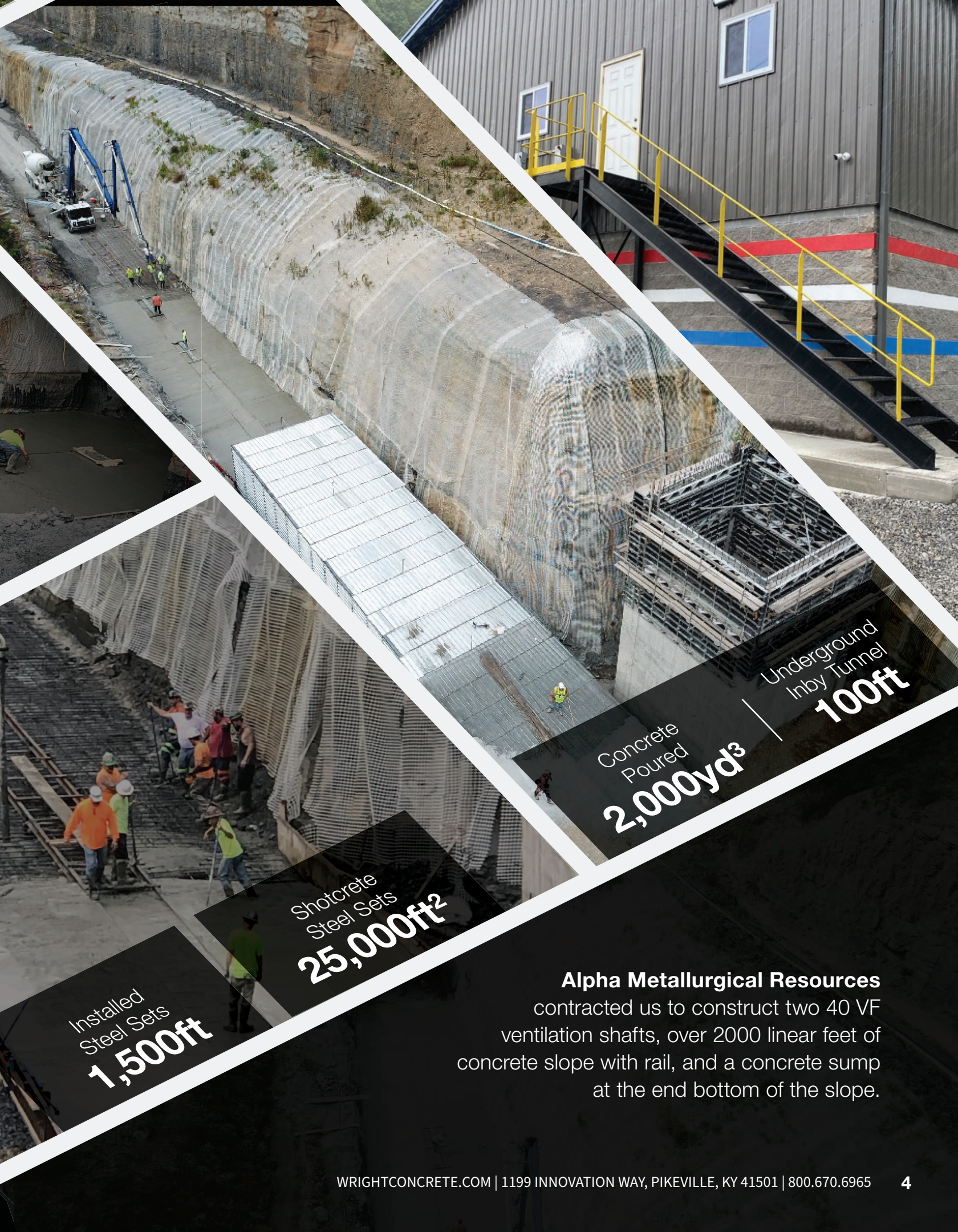


# 1 | LYNN

## LYNN BRANCH MINE NO. 2







Concrete  
Poured  
**2,000yd<sup>3</sup>**

Underground  
Inby Tunnel  
**100ft**

Shotcrete  
Steel Sets  
**25,000ft<sup>2</sup>**

Installed  
Steel Sets  
**1,500ft**

**Alpha Metallurgical Resources**  
contracted us to construct two 40 VF  
ventilation shafts, over 2000 linear feet of  
concrete slope with rail, and a concrete sump  
at the end bottom of the slope.



# 2 | HYDRO ELECTRIC

## APPALACHIAN HYDRO ASSOCIATES



Concrete Poured  
**3,000yd<sup>3</sup>**

**Appalachian Hydro Associates** contracted us to construct a hydro-electric power plant they were building on the Kentucky River in Ravenna, KY at Lock 12. Lock 12 and dam were built from 1907-1910. We did all the grading and excavation for the Control Building, the conduit channel from the control building to the top of the lock wall, we formed and poured the foundation footings, concrete walls, floor slabs, erected all structure steel and the entire control building package. We installed 75 ft rock anchors into existing shore side lock wall, pressure grouted river side mono lifts, dewatered lock chamber and constructed all structural steel and concrete of power house.





Rebar  
**350,000lbs**





# RETAINING | WALLS

**WE ARE EXPERTS AT BUILDING HIGH-QUALITY AND REASONABLY PRICED RETAINING WALLS UNDER ANY TIME CONSTRAINT.**



# BRIDGES

**WE ARE A KENTUCKY AND WEST VIRGINIA STATE/DOT PRE-QUALIFIED BRIDGE CONSTRUCTION CONTRACTOR.**



Bridge over Marfork Creek for Alpha Metallurgical Resources Whitesville, WVA



68' Clear Span over the Guyandotte River, Pineville, WV



# STEEL | ERECTION

FROM DESIGN TO ERECTION, WE OFFER COMPETITIVELY PRICED BUILDING PACKAGES.



Pikeville High School Athletic Training Facility



Sevier Air Trampoline Park



Basin Tanks for WWTP for Elkhorn City, KY

## BUILDING WALLS

WE ARE EXPERIENCED IN BUILDING WALLS AND SITE  
RETAINING WALLS WITH MULTIPLE ANGLES AND ELEVATIONS.



Building Walls For a Bridge Abutment



Betsy Layne Fire Department  
6" Stem walls



Building walls for a Mud Sump for Vulcan Materials



# SLABS

FROM LASER-LEVELLED FACTORY FLOORS TO YOUR MOST DIFFICULT POST-TENSION SLAB PROJECTS, WE HAVE THE TOOLS AND MANPOWER.



5000 sqft Bath House at  
Lynn Branch Mine No. 2



Hunt Bros Pizza Distribution  
Center Jenkins, KY



Betsy Layne Fire Department Slab for  
the New Fire Tower Training Facility

# ARMORFORM® OVERFLOW SPILLWAY

ARMORFORM® UNIFORM  
SECTION MAT FOR A  
GROIN DITCH ON A REFUSE  
IMPOUNDMENT FOR BLACKHAWK





# AGGREGATE PRODUCER

# PROJECTS

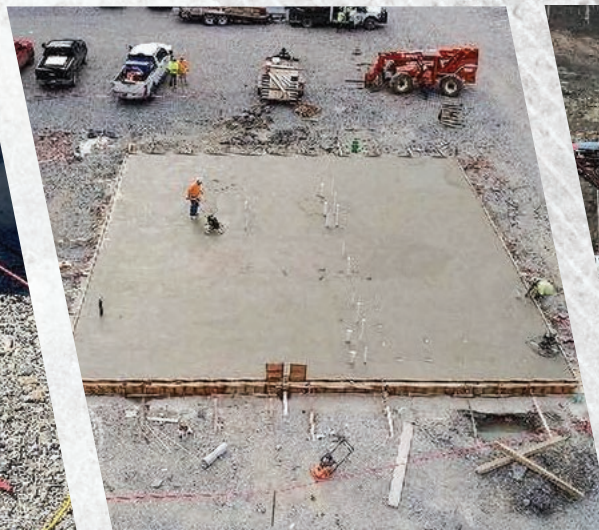
DRAINAGE MUD SUMP  
FOR VULCAN MATERIALS  
IN KINGSPORT, TN



# POST-TENSION

# SLABS

POST TENSION CABLES  
INSTALLED AND SLAB  
POURED.





# FOUNDATIONS

FROM LASER-LEVELLED FACTORY FLOORS TO YOUR MOST DIFFICULT POST-TENSION SLAB PROJECTS, WE HAVE THE TOOLS AND MANPOWER.





# STACKING TUBES & SILOS

WITH MULTIPLE CREWS WORKING AROUND THE COUNTRY, WE HAVE THE FORMING APPLICATIONS AND SKILLS TO BE EFFICIENT AND HIGHLY COMPETITIVE.



# TRUCK DUMPS & CRUSHERS

WE OFFER A WIDE RANGE OF DESIGN AND CONSTRUCTION OPTIONS TO MEET YOUR MOST CHALLENGING NEEDS.



**Met Investments** contracted us to come and repair their existing truck dump. We repaired the holes in concrete, cut out the existing rebar, replace with new Q-decking and new rebar and then tied a new mat of rebar on the entire area of the truck dump.



# PRESSURE GROUTING

UTILIZING TRACK DRILLS & DOWN-HOLE REMOTE CAMERA SYSTEMS, WE CAN COMPLETE YOUR PRESSURE GROUTING PROJECT QUICKLY AND EFFICIENTLY.



We successfully stabilized a 24-hour WalMart store in West Virginia with **zero interruption** in operations. We drilled approximately 80,000 feet of vertical and angle holes approximately 200 feet deep to an open mine that was causing subsidence under the store and in the surrounding parking and loading areas. We then pumped approximately 30,000 cy of our special concrete and grout filling the voids.

# DITCH GROUTING

We are contracted by multiple different companies to grout their **groin ditches** on impoundments in several different states in Appalachian.





# SHOTCRETE & GUNNITE

WITH MULTIPLE CREWS  
WORKING AROUND THE  
COUNTRY, WE HAVE THE  
FORMING APPLICATIONS AND  
SKILLS TO BE EFFICIENT AND  
HIGHLY COMPETITIVE.



As your local state pre-qualified installer, we can apply **shotcrete** to hard-to-reach places at a blistering pace, utilizing our new **Wright Concrete-designed nozzle**—a more cost-effective method than our competitors.





# WRIGHTWAY DRILLING



## WRIGHTWAY DRILLING & EXPLORATION, LLC OFFERS THE FOLLOWING TYPES OF SERVICES:

- Core Drilling
- Auger Drilling
- Hammer Drilling
- Downhole Cameras
- Land Reclamation
- Tie Backs
- Anchor Drilling
- Caisson Drilling
- Soil Nailing
- Horizontal Boring
- Directional Drilling



**The UPike project** consisted of drilling and installation of 45 feet long steel beams for piling. Wooden beams were installed as wall lagging. We then drilled and installed over 56 tie back anchors up to 45 feet in depth.



## Beech Creek Dam Manchester, KY

**THE BEECH CREEK DAM SPILLWAY** project consisted of drilling over 24 holes to install a grout curtain in the spillway area. 73 rock anchors were drilled and grouted to anchor the concrete spillway and walls to the rock surface.

## American Electric Power Haysi Rock Slide

We were contracted to install 84 Rock Anchors by drilling, and grouting them into place, installing drain strips and then shotcrete 3,520 sf of highwall stabilization.





# WRIGHTWAY CONCRETE PUMPING

**WRIGHTWAY**  
**CONCRETE PUMPING**



**PUMPING CONCRETE IN ALL KINDS OF DIFFERENT AREAS AND PROJECTS**  
**MEMBER OF CONCRETE ASSOCIATION**



**Diesel/Electric**

**Permissible/Non-Permissible**

**10 Boom Pumps from 22 Meter to 52 Meter**

**8 Line Pumps**

**High Pressure 480v Electric**

**High Pressure High Rise Pumps**

**Underground Pumps**

**22 Meter Robotic Shotcrete Rig**



**LOCATIONS: PIKEVILLE, KY | LEXINGTON, KY | LOGAN, WV**

WRIGHTCONCRETE.COM | 1199 INNOVATION WAY, PIKEVILLE, KY 41501 | 800.670.6965



# WRIGHTWAY RENTAL

WE STRIVE TO  
PROVIDE SERVICE  
AND PRODUCTS  
THAT SAVE TIME  
AND RESOURCES.

WRIGHTWAY  
RENTAL & SUPPLY



Wrightway Rental and Supply is a full service equipment rental and supply sales company located at 190 Mayo Circle in Pikeville. **We carry a full line of equipment for contractors and homeowners.** It is our goal to serve this region with professionalism and customer service second to none.



We carry Hilti, Husqvarna, Multiquip and other brands considered by professionals to be the very best. The concrete and masonry tools **we carry are exceptional in both quality and value.** We realize our customer's time is valuable and we strive to provide service and products that save time and resources.



# WRIGHT XPRESS



WRIGHT XPRESS CONVEYOR & VULCANIZING, LLC IS A FULL SERVICE CONVEYOR BELT AND STRUCTURE COMPANY WITH SEVERAL LOCATIONS BASED THROUGHOUT THE EASTERN U.S.



## **FENNER & DUNLOP** AUTHORIZED DISTRIBUTOR

- Pulley Lagging installation & Sales
- Belt Vulcanizing & Installation
- New & Used Belt Sales
- Saddle Installation
- Mechanical Splices
- Structure Sales, Installation & Repairs
- Belt Rolling & Trimming
- Belt Scrapers





# WRIGHTWAY | READY-MIX



READY-MIX OFFERS MIX DESIGNS,  
PORTABLE CONCRETE PLANTS,  
AND READY-MIX CONCRETE.

**WE OFFER PROJECT SPECIFIC PORTABLE ON-SITE PLANTS. WE  
HAVE 200+ YARD PER HOUR CAPABLE PLANTS.**



**PROUDLY SERVING EASTERN KENTUCKY & SOUTHERN WEST VIRGINIA**



# WRIGHT-MIX MATERIALS



## **Wright-Mix Concrete**

- 3000 psi Concrete Mix
- 4000 psi Concrete Mix
- 5000 psi Concrete Mix

## **Wright-Pave**

- 5000 psi Fiber Reinforced Concrete Mix

## **Wright-Mix Masonry Products**

- Type N Masonry Cement
- Type N Masonry Mortar

## **Wright-Mix Grout**

- Grout-Wright NS Non-Shrink Non-Staining Grout
- Wright-Fill Cellular Grout

## **Wright-Shot Shotcrete/Gunnite**

- Wright-Shot Shotcrete/Gunnite Mix
- Wright-Shot ES 14-3
- Wright-Shot ES 21-3

## **Wright-Mix Express Set Product Line**

- Express Set Cement
- Express Set 21-3 Concrete Mix
- Express Set 27-3 Concrete Mix

## **Wright-Mix Rock Dust Product Line**

- Bulk Tanker Dust
- 2000 and 3200 lbs. Bulk Bag
- 40 lbs. Hand Bag
- Aerated Rock Dust





# WRIGHT CONCRETE UNDERGROUND



**WE HAVE SPECIAL MIX DESIGNS AND EQUIPMENT THAT MAKES US THE ONE OF THE MOST EFFICIENT AND EFFECTIVE COMPANIES IN THE BUSINESS.**

## **THE NATION'S FOREMOST EXPERT IN LOW DENSITY CELLULAR CONCRETE INSTALLATION**

The Wright Companies have been recognized as pioneers in the production and installation of cellular void-fill material. Over the past fifteen years, they have developed equipment and methods to preform and control nearly every aspect of these projects:

- **Wright Underground** installs more than 100,000 CY of low density cellular concrete in various industries each year throughout the United States.
- **Wrightway Ready Mix** provides on site mobile batch plants and custom built pumps and injection equipment.
- **Wrightway Drilling** utilizes nine shallow or deep hole crawler or truck-mounted drill rigs.
- **Wright-Mix Material** provides solutions for material design, blending, bagging and delivery.
- **Wrightway Concrete & Construction** specializes in point of placement installation with both surface and underground formwork and on site QC Testing.

**The Wright Companies** have worked diligently to perfect this industry's materials and methods so you can be assured your project's guidelines and time frames are always met.





# TSL FLEXNITE™

**WRIGHT TSL'S**  
(THIN SKIN  
LINERS)

Although we spray many types of coatings for various underground applications, we, now along with our Mix Materials Division are producing and installing in our opinion (and many others) the flat out best thin skin liner (TSL) on the market today. This coating can be sprayed to various thicknesses and will help stop any scaling or spalling of rock by weather or other underground harsh conditions.







**Brick**  
For Residential And Commercial Use



**Concrete Block**  
Residential | Commercial | Mining



**Veneer Stone**  
Natural/Manufactured | Interior/  
Exterior | Walls/Sidewalks



**Custom Cast Stone**  
Column Caps | Wall Caps | Seat Caps |  
Sills | Banding | Custom Made To Order

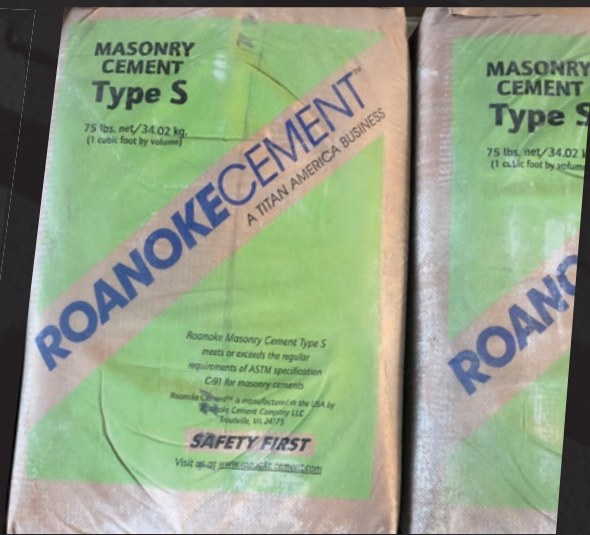


**Custom Pre-cast Concrete**  
Column Caps | Wall Caps | Seat Caps |  
Sills | Banding | Custom Made To Order



**Custom Limestone**  
Column Caps | Wall Caps | Seat Caps |  
Sills | Banding | Custom Made To Order





**Mortar**  
Type N | Type S



**Ohio River Masonry**  
Sand Bulk | One Ton Bags



**White Sand Bulk And**  
**One Ton Bags**



**Crushed Brick**  
Landscaping | Ball Fields



**Rock Dust**



**Bulk Loads for Mining Industry**



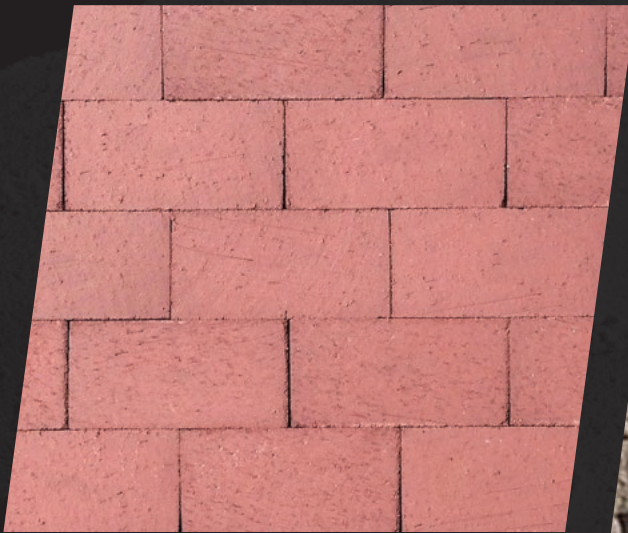


**Bagged Concrete Mix**



**Pavers**

Clay/Concrete | Thick/Thin | Porches |  
Patios | Sidewalks | Driveways



**Fireplace Construction Materials**

Cast Iron Dampers | Flue Liners | Fire Brick  
| Fire Clay | Clean Outs | Ash Dumps



**Retaining  
Wall  
Block**

  
**VERSA-LOK®**  
Retaining Wall Systems  
*Solid Solutions.™*



# LOCATIONS



**Wright Block and Precast, LLC**  
(parent company)

- Pikeville, KY
- Harlan, KY
- Allen, KY
- Ashland, KY
- Bessemer, AL

**Satellite store for masonry accessories**

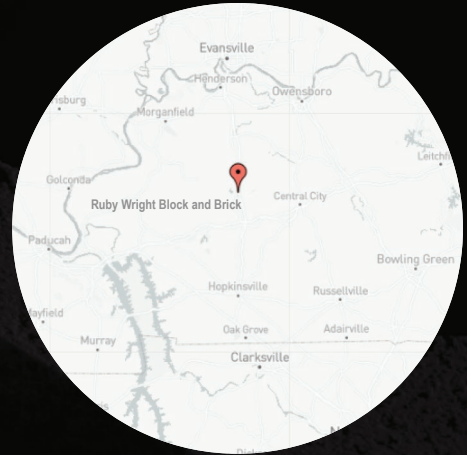
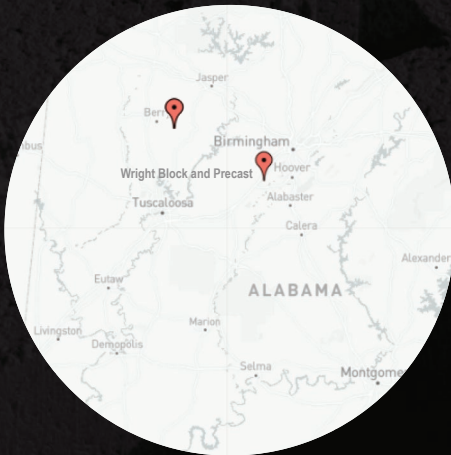
- Lexington, KY



[www.wrightconcrete.com](http://www.wrightconcrete.com)

**Ruby Wright Block & Brick, LLC**

- Madisonville, Ky





# WRIGHT CONCRETE



800.670.6965

[WRIGHTCONCRETE.COM](http://WRIGHTCONCRETE.COM)

1199 Innovation Way, Pikeville, KY 4150

CONSTRUCTION | CONCRETE BLOCK | TOLL-BLENDING | DRILLING  
READY MIX | CONCRETE PUMPING | CONVEYORS | EQUIPMENT RENTAL